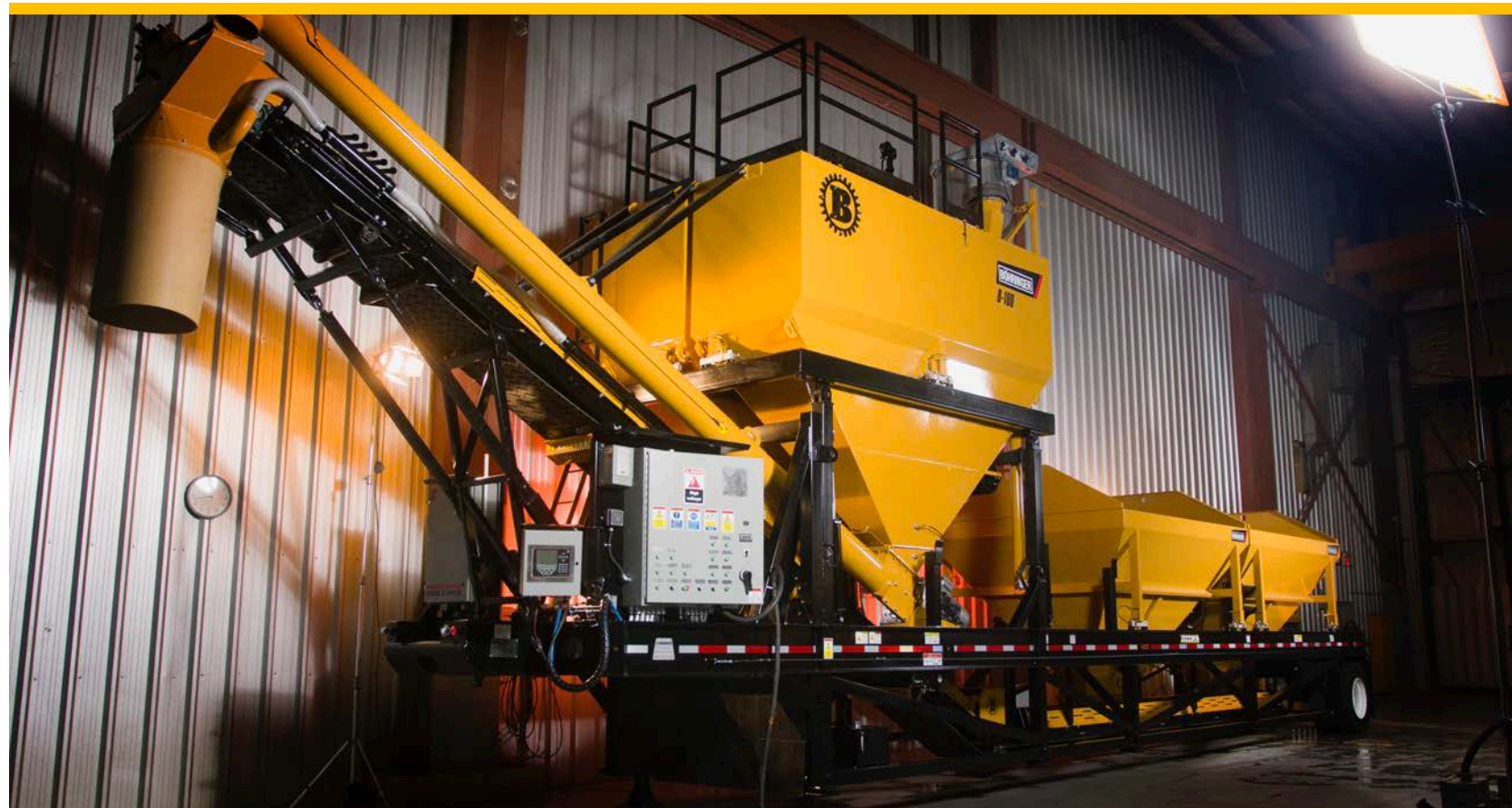




BREAKING BOUNDARIES SINCE  
1948

## B-100 Concrete Batch Plant



## B-100 Concrete Batch Plant



The 6<sup>th</sup> generation B-100 concrete batch plant is designed and built to Böhringer’s exacting standards, delivering first in class versatility and performance – with achievable batching times of 2-3 minutes per cycle\*.

This high-performance workhorse, offers a condensed footprint, meant to be fed by a front-end loader, without the need for extensive staging or concrete foundations. Quick setup times ensure that your B-100 gets straight to work with no hassle.

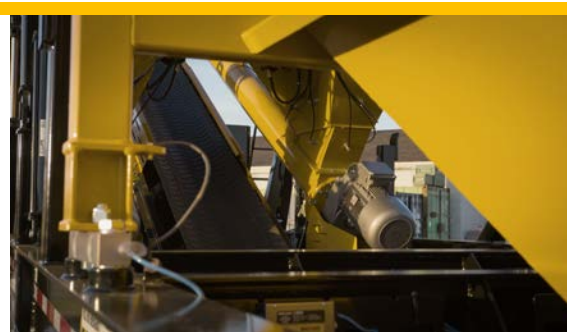
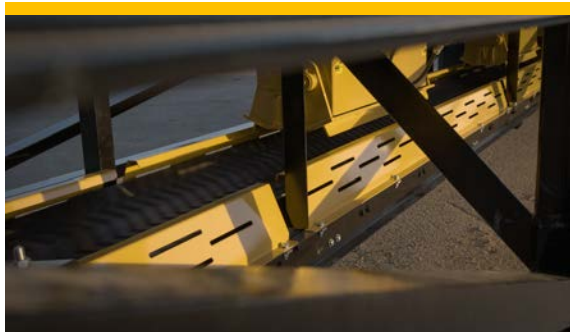
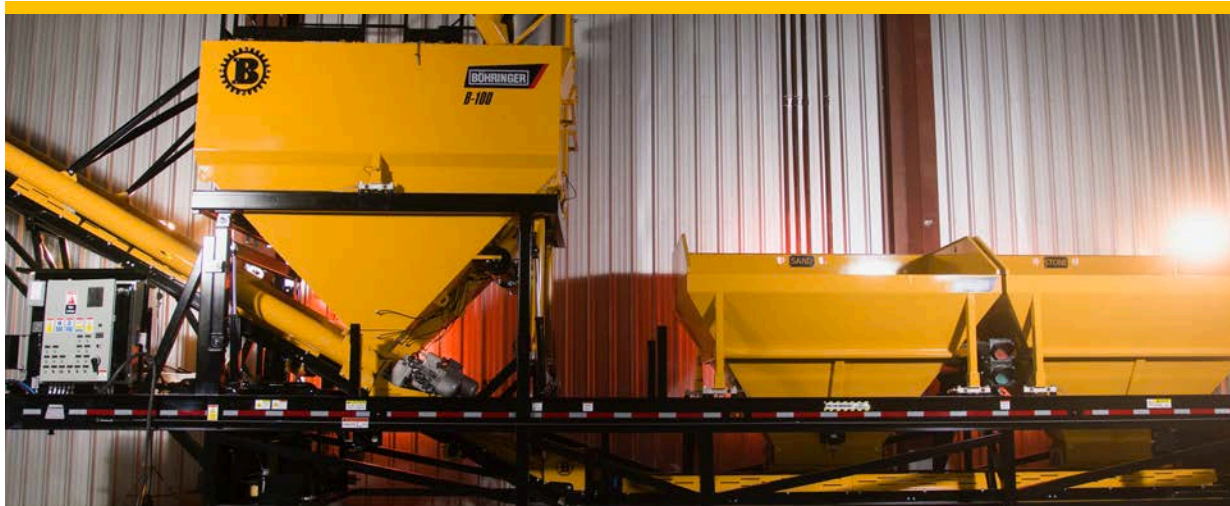
*\* Theoretically 91m3/hr = 120 cubic yards.*

### Key Features

No Permits Required	Applicable to most jurisdictions when running a generator
Fast Setup	Simple sophistication makes the B-100 the industry leader for one person setup and operation
Mobility	Easy to transport – reducing downtime between jobs and getting your concrete batches right to where they need to be.
Clam Gates	Ensures prompt and accurate discharge of aggregates
Augers	Clean discharge of material, minimizing unwanted dust
Böhringer Automation	Produces consistent high-quality batches at record speeds. Cloud accessible operation allows for direct integration with leading accounting software and batch ticket backups
Onboard Compressor	Allows for efficient operation of all functions without increasing your footprint
Water Meter	Fast and accurate discharge of water reduces batching time and saves you money
Air Compressor w/ Auxiliary Hookup	No extra compressor needed to run auxiliary equipment or tools
Finger Guards and Ladder Cages	MSHA and OSHA compliant safety guarding – protecting your personnel and maximizing job site safety
Hydraulic Setup	No cranes required!
Gauges	Establish settings, monitor cement fluidizers, dust collectors, water valves and main air supply
Dust Collector w/ 3 Foot Square Personnel Hatch	Allows for easy access to the silos, for inspection and maintenance



## B-100 Concrete Batch Plant



Specifications	
Two Aggregate Bins	18,000Kg 20Ton Capacity
Cement Silos Dual	100m 3/hr. 120yd 3/hr. 48ft 8ft 6in
Storage Capacity Per Silo	328 cu.ft
Main Conveyor	26in Chevron
Main Conveyor Drive	HP 10 HP
Cement Augers	10" (x2)
Cement Augers Drive	20 HP (x2)
Water Pump Size	3"
Water Meter Size	3"
Dust Collection	Yes
Number of Axles	Twin
Control Panel	Yes
Air Compressor 80-Gal	10 HP System
Production	120m 3/hr. 131yd 3/hr. "Continuous Mix"
Plant Length	48' - 14,600m
Plant Width	8' 6" - 2,621m
Transport Height	13' 6" - 4,145m



Böhringer Group. Limited  
STE 704, 5319 - 3rd Street SE Calgary,  
Alberta CANADA T2H 1J7

403-227-2820  
[info@bohringergroup.com](mailto:info@bohringergroup.com)  
[www.bohringergroup.com](http://www.bohringergroup.com)

All specifications are current as of this printing but are subject to change without notice . At all times Contact Böhringer Distributor or Böhringer directly for clarity on all specifications.  
NOTE! The Caterpillar content in this document is the property of Caterpillar Inc. Böhringer Group Ltd is a Caterpillar licensee and does not purport to be the owners of the Caterpillar product IP referenced or used in this document. "All Rights are Reserved".

---