

TRP + ENGINE UNIT ON TRACKS

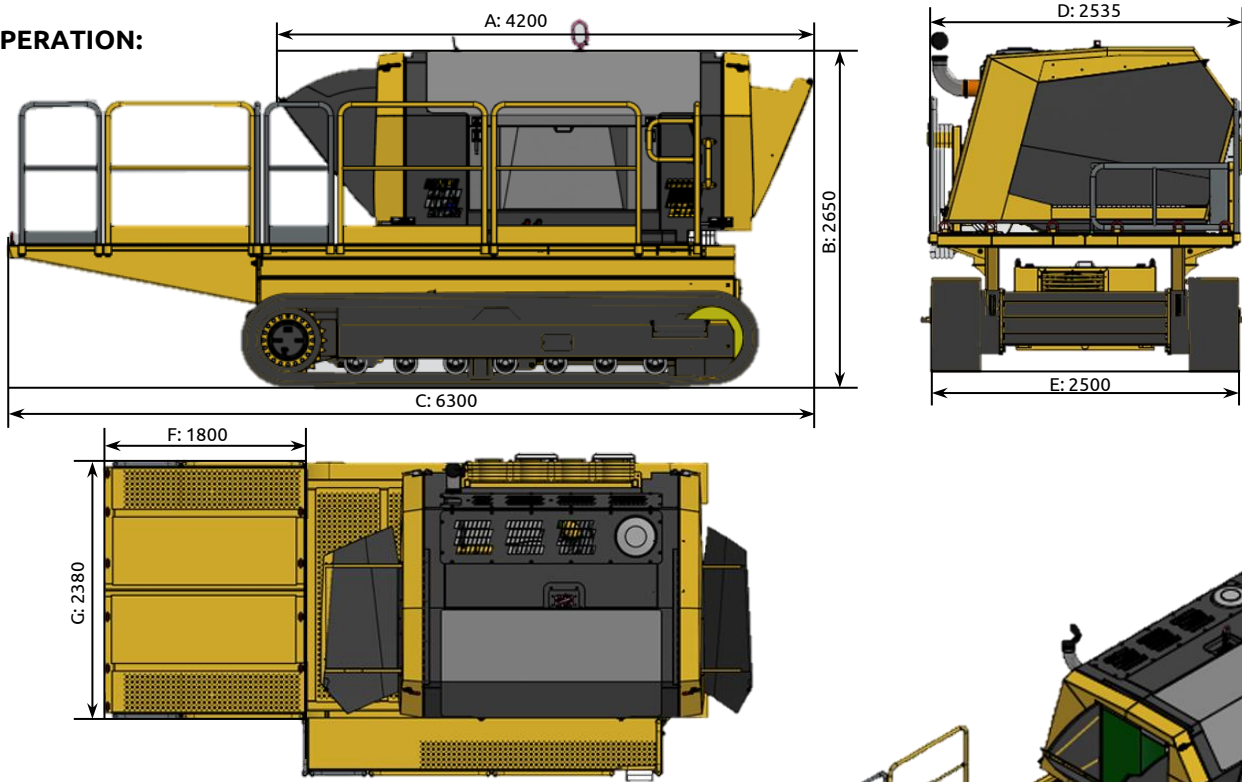


M3e: 04 l engine (123 kW; 200 kVA)
M3e: 06 l engine (202 kW; 300 kVA)
M3e: 09 l engine (....)
M4e: 09 l engine (251 kW; 325 kVA)
M4e: 12 l engine (316 kW; 450 kVA)
M5e: 12 l engine (352 kW; 450 kVA)
M6e: 15 l engine (423 kW; 550 kVA)
M7e: 18 l engine (525 kW; 550 kVA)



DIMENSIONS

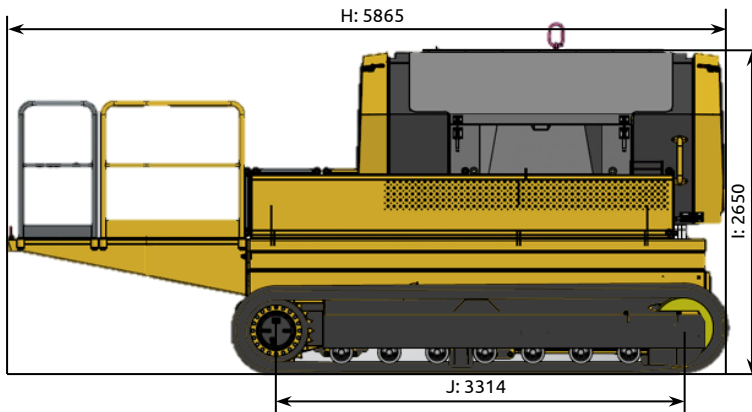
OPERATION:



Weight: approx. 9 t (without options)

Transport width: 2.500 mm (8'2")

TRANSPORT:



REMARK: All pictures might show options, not included in the scope of supply

A	B	C	D	E	F	G	H	I	J
4200	2650	6300	2535	2500	1800	2380	5865	2650	3314
13'9"	8'8"	20'8"	8'4"	8'2"	5'10"	7'10"	19'3"	8'8"	10'10"

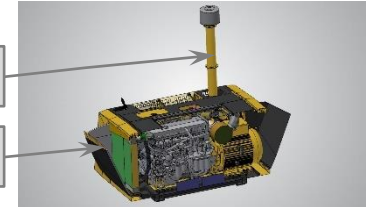
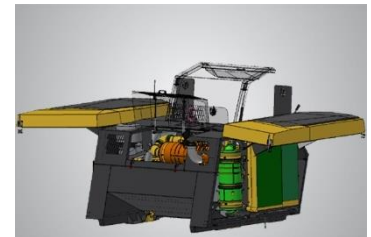
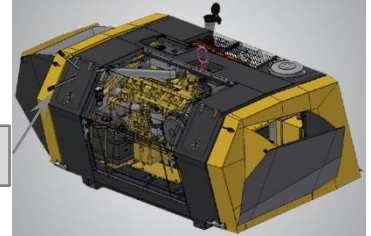
TECHNICAL SPECIFICATION

1) ENGINE UNIT (DROP – OFF)

EU = Europe / US = United States
REM = ROW - Rest of World (except China and India)

Legend:
(a) = actual; (s) = standard; (o) = optional

- Diesel Motor, Type	a) CUMMINS L9 (EU + US) - (s)	p/n P100236
- Emission control	Tier 4f; EU STAGE V; DOC / SCR / DPF	
- Power ISO 14396	251 kW @ 1.500 R.P.M.; 283 kW @ 1.800 R.P.M.	(341 / 385 hp)
- Max. torque	1.795 Nm @ 1.400 R.P.M.	(1.324 lbft)
- Motor revolution	1.500 R.P.M. up to 1.800 R.P.M.	
- Bore hole/stroke	114 x 145 mm	
- Combustion chamber	8.900 cm ³	(543 cuin)
- Voltage	24 Volt (for improved cold start properties)	
- Cooling	Combi cooler (water, air) with fan ø 800 mm, max. 1.600 R.P.M.	
- Fuel	450 Litres stainless steel; acc. to EN 590	(119 gal)
- Air filter	Cyclone pre-filter + dual stage fine filter	
- Alternator	400 V; 50 or 60 Hz, 325 kVA; IP 67	
- Power Plug-out	For drive of the crusher, a POWER LOCK plug-out is foreseen: 3 Phases, 400V; 50 Hz; 450 kVA (660 A) In addition, a plug out for service 3 Phases, 400V; 50 Hz, 32 A and a plug-out for working machines 3 Phases, 400V; 50 Hz, 63 A is foreseen	
- Set up on working machines	The diesel genset can be set up on working machines which are provided for this. (DROP - ON / DROP - OFF). Releasing is done via a manually operated hydraulic pump. A central lifting point is provided for attached lifting equipment.	
- Control	4,3" Display with control panel	
- Exhaust	Extension included in scope of delivery	
- Air inlet / Air outlet	Fold-able air inlet/outlet channel	



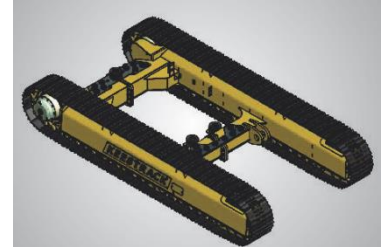
ATTENTION

Engine warranty expires in case non genuine Keestrack filters are used!

TECHNICAL SPECIFICATION

2) TRACK - UNIT

- Length	3.314 mm	(10'10")
- Width track shoe	400 mm	(1'4")
- Total width	2.500 mm	(8'2")
- 2 speeds	1,1 km/h and 2 km/h	(0,7 / 1,2 mph)
- Drive	Hydraulic piston motor and planetary gears	



3) CONTROL

- Type	PLC – IP 67; dust and vibration proof	
- Display	LCD screen 4,3"	
- Operation	Control panel	
- Connection to other machines	Plugs are foreseen to transfer signals to foregoing and following machines to give signal "Ready for operation" and "Stop" in case following machine is not ready for operation.	



4) PLATFORM

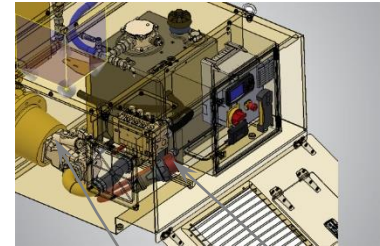
Application	For adding a diesel tank up to 2.000 l	(528 gal)
-------------	--	-----------



TECHNICAL SPECIFICATION

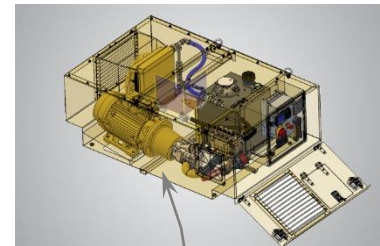
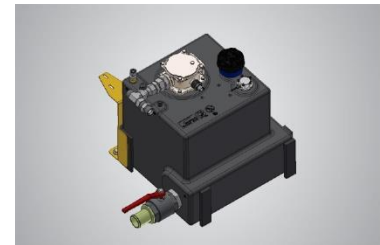
5) DRIVE TRAIN

- Plug In (=power supply)	Socket 63 A, 3 phase + N + E (mounted on a short cable for ease of connection), 400 V, 50 Hz
- Hydraulic drive	E-motor 22 kW with frequency inverter for hydraulic pump, hydraulic cylinders and crawlers
- Hydraulic pump	Variable flow, swash plate pump load sense open loop circuit 65 cc
- Max. flow	140 l/min (37 gpm)
- Max. pressure	265 bar
- Pump regulation	servo hydraulic load sensing regulation, pressure compensation, flow compensation automatic flow optimizer
- Hydraulic tank	90 l (plastic) (24 gal)
- Hydraulic oil filter	1 full flow filter in return line with integrated fine filter area (10 µm) (p/n 101187)
- Hydraulic oil cooler	Integrated compact cooler



Hydraulic pump with E-motor

63 A; 400 V; 50 Hz; 3 phase Socket for external power supply



Drive train compartment

TECHNICAL SPECIFICATION - OPTIONS

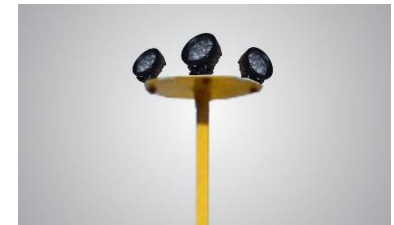
6) RADIO REMOTE CONTROL 10 F – Level 2

- | | |
|-------------|--|
| - Order no. | Remote 100450, 433 MHz
Sticker 101464 |
| - Functions | - Tracks forwards / backwards with automatic speed control
- Apron feeder start / stop and + / -
- Automatic start / stop
- Machine stop button (blue)
- Display |



7) WORKING LIGHTS p/n 701006

- | | | |
|----------------------|--|---------|
| - Tower with 4 lamps | p/n 701006
LED lights 12/24 V; 45 W
each lamp: 9 pcs. LED's (p/n 205147)
4500 Lumen | |
| - protection degree | IP69K | |
| - Weight | 9 kg | (20 lb) |



9) PLUG-IN CONNECTIONS

- | | | |
|---------|---|-------|
| Plug-in | 3 phases + E, 660 A POWERLOCK
+ 25 m cable | (82') |
|---------|---|-------|



TRP + ENGINE UNIT ON TRACKS

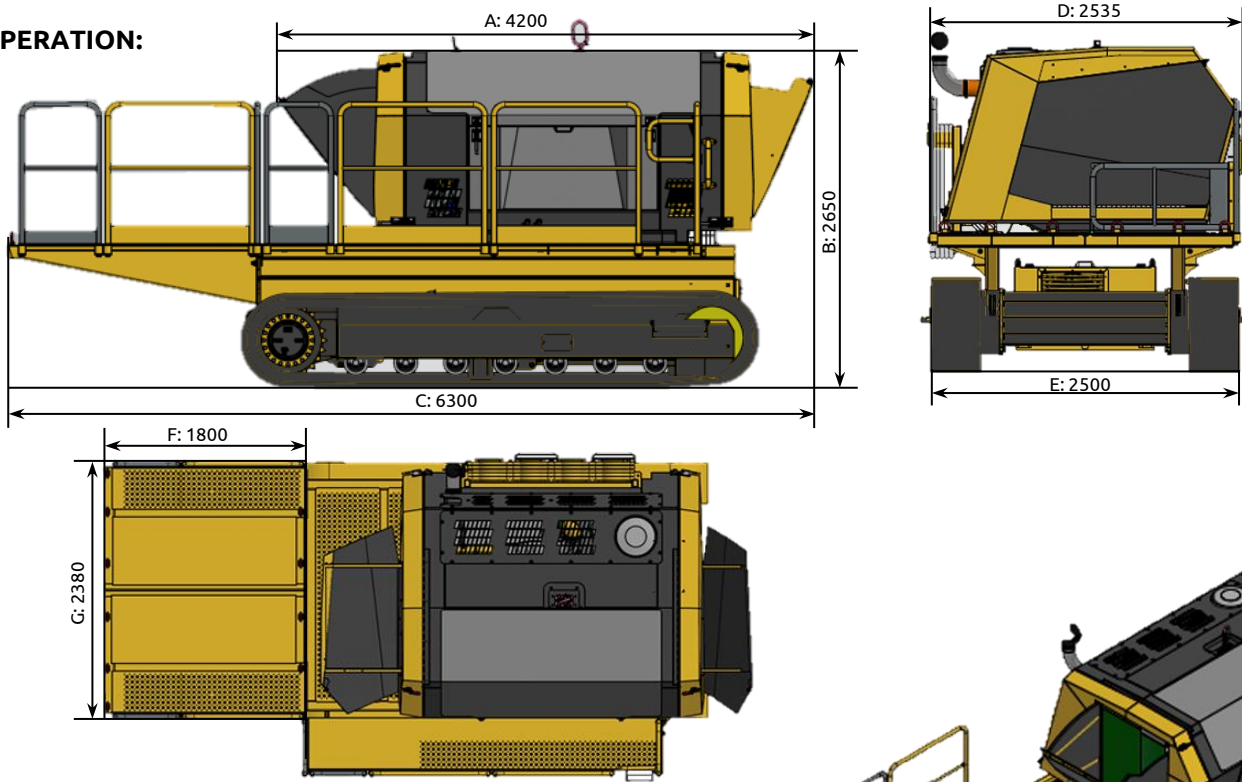


M3e: 04 l engine (123 kW; 200 kVA)
M3e: 06 l engine (202 kW; 300 kVA)
M3e: 09 l engine (....)
M4e: 09 l engine (251 kW; 350 kVA)
M4e: 12 l engine (316 kW; 450 kVA)
M5e: 12 l engine (352 kW; 450 kVA)
M6e: 15 l engine (423 kW; 550 kVA)
M7e: 18 l engine (525 kW; 550 kVA)



DIMENSIONS

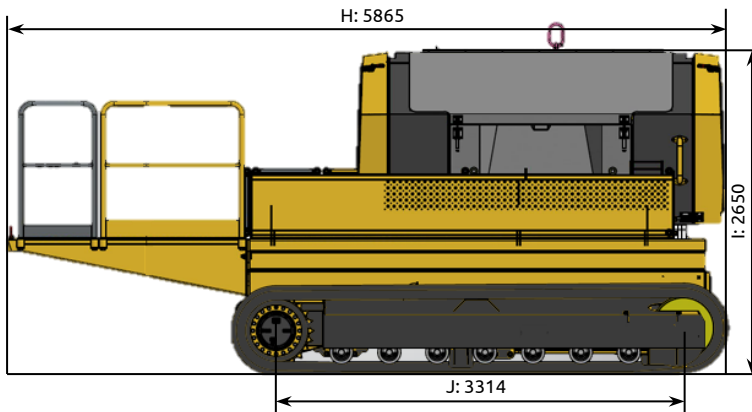
OPERATION:



Weight: approx. 11 t (without options)

Transport width: 2.500 mm (8'2")

TRANSPORT:



REMARK: All pictures might show options, not included in the scope of supply

A	B	C	D	E	F	G	H	I	J
4200	2650	6300	2535	2500	1800	2380	5865	2650	3314
13'9"	8'8"	20'8"	8'4"	8'2"	5'10"	7'10"	19'3"	8'8"	10'10"

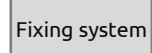
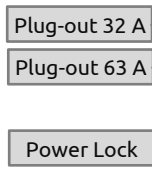
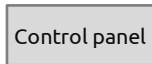
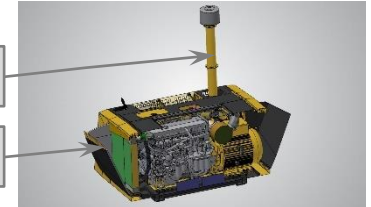
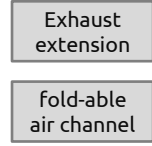
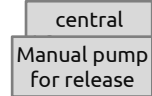
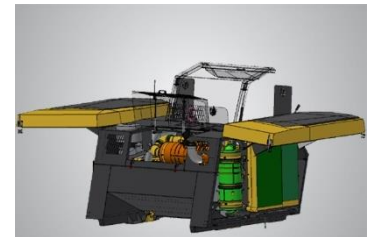
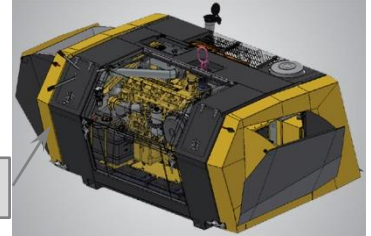
TECHNICAL SPECIFICATION

1) ENGINE UNIT (DROP – OFF)

EU = Europe / US = United States
 REM = ROW - Rest of World (except China and India)

Legend:
 (a) = actual; (s) = standard; (o) = optional

- Diesel Motor, Type	CUMMINS X12 (EU + US) - (s)	p/n P100395
- Emission control	Tier 4f; EU STAGE V; DOC / SCR / DPF	
- Power ISO 14396	352 kW @ 1.500 R.P.M.; 382 kW @ 1.800 R.P.M.	(479 / 520 hp)
- Max. torque	2.240 Nm @ 1.500 R.P.M.; 2.030 Nm @ 1.800 R.P.M.	(1.652 lbft / 1.497 lbft)
- Motor revolution	1.500 R.P.M.	
- Bore hole/stroke	132 x 144 mm	
- Combustion chamber	11.800 cm ³	(720 cuin)
- Diesel consumption	206 g/kWh @ 1.800 R.P.M.	
- Voltage	24 Volt (for improved cold start properties)	
- Cooling	Combi cooler (water, air) with fan ø 800 mm, max. 1.600 R.P.M.	
- Fuel	450 Litres stainless steel; acc. to EN 590	(119 gal)
- Air filter	Cyclone pre-filter + dual stage fine filter	
- Alternator	400 V; 50 or 60 Hz, 450 kVA; IP 67	
- Power Plug-out	For drive of the crusher, a POWER LOCK plug-out is foreseen: 3 Phases, 400V; 50 Hz; 450 kVA (660 A) In addition, a plug out for service 3 Phases, 400V; 50 Hz, 32 A and a plug-out for working machines 3 Phases, 400V; 50 Hz, 63 A is foreseen	
- Set up on working machines	The diesel genset can be set up on working machines which are provided for this. (DROP - ON / DROP - OFF). Releasing is done via a manually operated hydraulic pump. A central lifting point is provided for attached lifting equipment.	
- Control	4,3" Display with control panel	
- Exhaust	Extension included in scope of delivery	
- Air inlet / Air outlet	Fold-able air inlet/outlet channel	

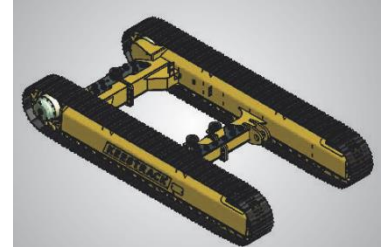


ATTENTION *Engine warranty expires in case non genuine Keestrack filters are used!*

TECHNICAL SPECIFICATION

2) TRACK - UNIT

- Length	3.314 mm	(10'10")
- Width track shoe	400 mm	(1'4")
- Total width	2.500 mm	(8'2")
- 2 speeds	1,1 km/h and 2 km/h	(0,7 / 1,2 mph)
- Drive	Hydraulic piston motor and planetary gears	



3) CONTROL

- Type	PLC – IP 67; dust and vibration proof	
- Display	LCD screen 4,3"	
- Operation	Control panel	
- Connection to other machines	Plugs are foreseen to transfer signals to foregoing and following machines to give signal "Ready for operation" and "Stop" in case following machine is not ready for operation.	



4) PLATFORM

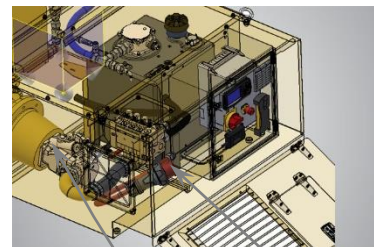
Application	For adding a diesel tank up to 2.000 l	(528 gal)
-------------	--	-----------



TECHNICAL SPECIFICATION

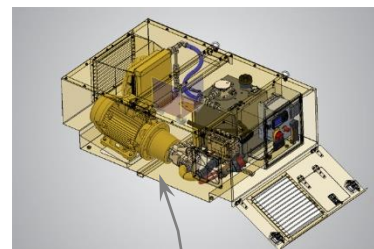
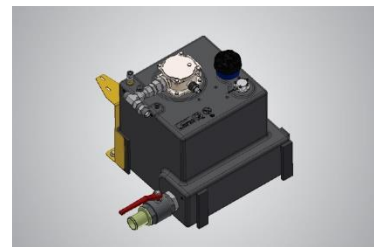
5) DRIVE TRAIN

- Plug In (=power supply)	Socket 63 A, 3 phase + N + E (mounted on a short cable for ease of connection), 400 V, 50 Hz	
- Hydraulic drive	E-motor 22 kW with frequency inverter for hydraulic pump, hydraulic cylinders and crawlers	
- Hydraulic pump	Variable flow, swash plate pump load sense open loop circuit 65 cc	
- Max. flow	140 l/min	(37 gpm)
- Max. pressure	265 bar	
- Pump regulation	servo hydraulic load sensing regulation, pressure compensation, flow compensation automatic flow optimizer	
- Hydraulic tank	90 l (plastic)	(24 gal)
- Hydraulic oil filter	1 full flow filter in return line with integrated fine filter area (10 µm) (p/n 101187)	
- Hydraulic oil cooler	Integrated compact cooler	



Hydraulic pump with E-motor

63 A; 400 V; 50 Hz; 3 phase Socket for external power supply



Drive train compartment

TECHNICAL SPECIFICATION - OPTIONS

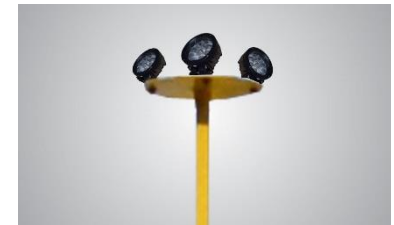
6) RADIO REMOTE CONTROL 10 F – Level 2

- | | |
|-------------|--|
| - Order no. | Remote 100450, 433 MHz |
| | Sticker 101464 |
| - Functions | <ul style="list-style-type: none"> - Tracks forwards / backwards with automatic speed control - Apron feeder start / stop and + / - - Automatic start / stop - Machine stop button (blue) - Display |



7) WORKING LIGHTS p/n 701006

- | | | |
|----------------------|--------------------------------------|---------|
| - Tower with 4 lamps | p/n 701006 | |
| | LED lights 12/24 V; 45 W | |
| | each lamp: 9 pcs. LED's (p/n 205147) | |
| | 4500 Lumen | |
| - protection degree | IP69K | |
| - Weight | 9 kg | (20 lb) |



9) PLUG-IN CONNECTIONS

- | | | |
|---------|-------------------------------|-------|
| Plug-in | 3 phases + E, 660 A POWERLOCK | |
| | + 25 m cable | (82') |

